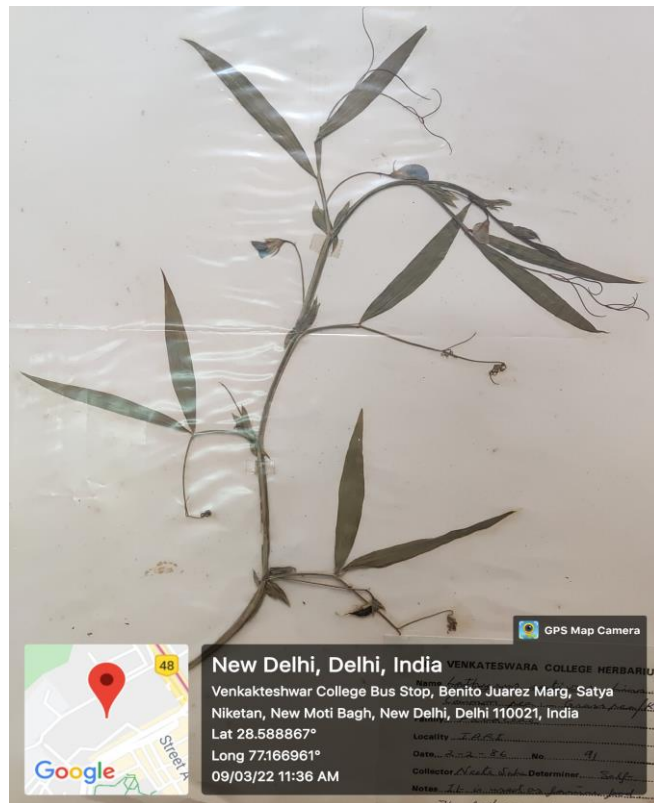


Lathyrus sativus



Common Name: Indian pea

Scientific Name: *Lathyrus sativus*

Family: Fabaceae

It is commonly grown for human consumption and livestock feed in Asia and East Africa. It is a particularly important crop in areas that are prone to drought and famine and is thought of as an insurance crop as it produces reliable yields when all other crops fail.

Economically Important Part: Seed

Economic Importance: Seeds are eaten as food and used as animal fodder. It is used in unleaved Indian Bread. The flowers of sweet pea are grown for their colour and fragrance. It is a crop of immense significance in developing nations. It is used as medicine.